

Installation Guide

For Installation Support please visit www.qube.tech/support or email support@qube.tech
For Urgent Support please call **866.618.8850**



December 2017

Site-Readiness

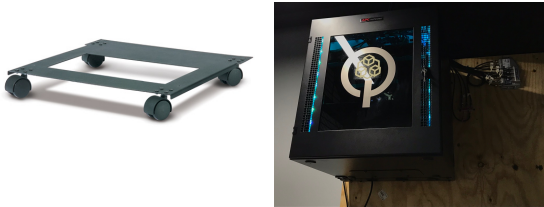
1

Location

Determine where you are going to install Qube. Qube can be installed the following ways:

- Fixed Floor Placement: Attach Feet to bottom of Qube
- Movable Floor Placement: Set Qube on Rolling Caster Kit (purchased separately)
- Wall Mount: We recommend a piece of 3/4" plywood be mounted flush to the wall first and then mount the Qube to the board.

Note: If you are not comfortable having this done we can dispatch a contractor to perform this work. You will be billed time and materials.



2

Power

We recommend at least a 15A circuit.

Qube includes a standard 3-prong NEMA 5-15P 8-foot power cord.

Note: Ensure the placement of the Qube is close enough to your outlet using the attached 8' power cord.

Do not use an extension cord.



3

Cooling

Qube includes a fan kit, which should generally be sufficient for most deployments.

The fan is recommended as a best-practice but is not required in small deployments (1 firewall, 1 switch, 1 Qube server). For instance, if Qube is installed under a desk and the fan may be too loud, the fan can be turned off. If excessive heat is noticed around the Qube, turn on the fan immediately and contact Support (support@qube.tech)

Installation

4

Physical Installation

Move Qube into place.

5

Connect Power

Connect Power directly to outlet.

DO NOT connect via extension cord.

6

Connect Internet

1. Install your modem or router using either the supplied shelf or an available rack space inside the Qube.
2. Connect the Orange cable labeled **Internet** to your modem/router

7

Connect Devices

1. Use the included Trunk Cables and connect to your patch panel.
2. Connect Phones, Access Points, Printers and Computers directly to switches as required.



QUBE is a Registered Trademark of Ubiquity, Inc.
© 2017 All Rights Reserved